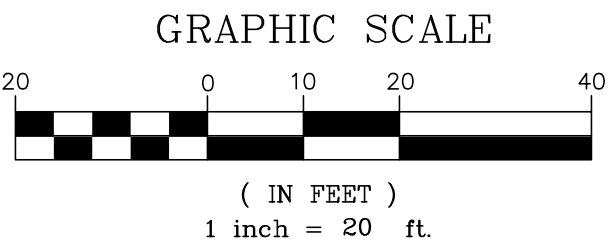
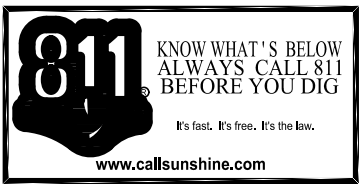
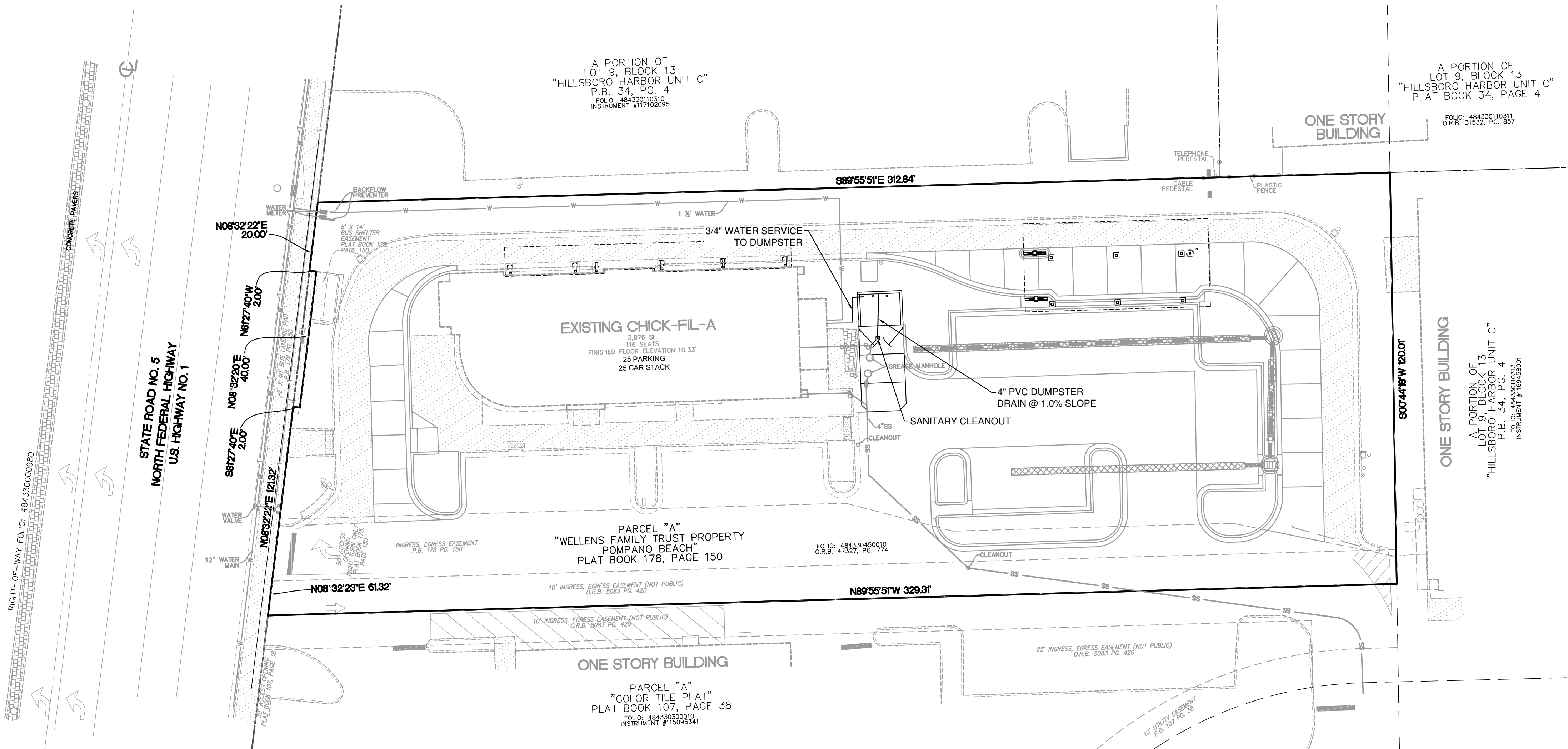
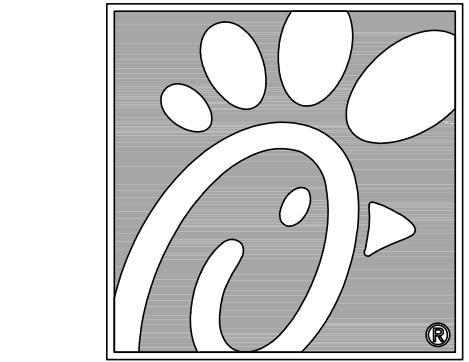


THIS DOCUMENT, TOGETHER WITH THE CONCEPTS AND DESIGN PRESENTED HEREIN, IS AN INSTRUMENT OF SERVICE. IT INTENDS ONLY FOR THE SPECIFIC PURPOSE AND CLIENT FOR WHOM IT WAS PREPARED. REUSE OF ANY UNPUBLISHED REVISIONS OR THE DOCUMENT WITHOUT WRITTEN AUTHORIZATION AND ADAPTATION BY BOWMAN CONSULTING SHALL BE WITHOUT LIABILITY TO BOWMAN CONSULTING.



LEGEND	
PROP. ASPHALT DRIVE	
PROP. CONC. SIDEWALK	
PROP. CONC. PAVEMENT	
PROP. TYPE 'F' CURB	
PROP. CATCH BASIN	
PROP. CURB INLET	
PROP. STORM SEWER	
PROPERTY LINE	
EX. CONCRETE PAVEMENT / SIDEWALK	
EX. CONCRETE D CURB	
EX. CONCRETE F CURB	
EX. EDGE OF SIDEWALK	
EX. SIGN	
EX. STORM INLET	
EX. SANITARY SEWER	
EX. WATER	
EX. COMMUNICATIONS	
EX. STORM SEWER	
EX. TREES	

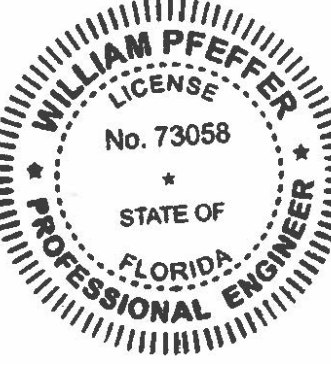


5200 Buffington Rd.
Atlanta Georgia,
30349-2998

Bowman

Certificate of Authorization License No. 30482
610 SE 7th St, Suite 300
Fort Lauderdale, FL 33316
Phone: (954) 314-6466
www.bowman.com
© 2021 Bowman Consulting Group Ltd

Seal



WILLIAM PFEFFER, P.E.
LICENSE NO. 73058
6/23/2021

CHICK-FIL-A
POMPANO BEACH
2250 NORTH FEDERAL HIGHWAY
POMPANO BEACH, FL 33062

FSU# 2483

REVISION SCHEDULE	
NO.	DATE
1	6/23/2021

DESCRIPTION

CURRENT DESIGN	2021-005
NOTE APPLIED	
PROJECT #	010014-01-138
PRINTED FOR	PERMIT
DATE	6/23/2021
DRAWN BY	ST

FOR PERMIT

DRC
PZ2-16500001
8/4/21